

Correctly Configure Your CardFive Dongle

Preperation

PC Connections

Before you start the procedure below, you must make sure that your CardFive dongle is plugged into your computers USB port or Serial port if you are using an older dongle.

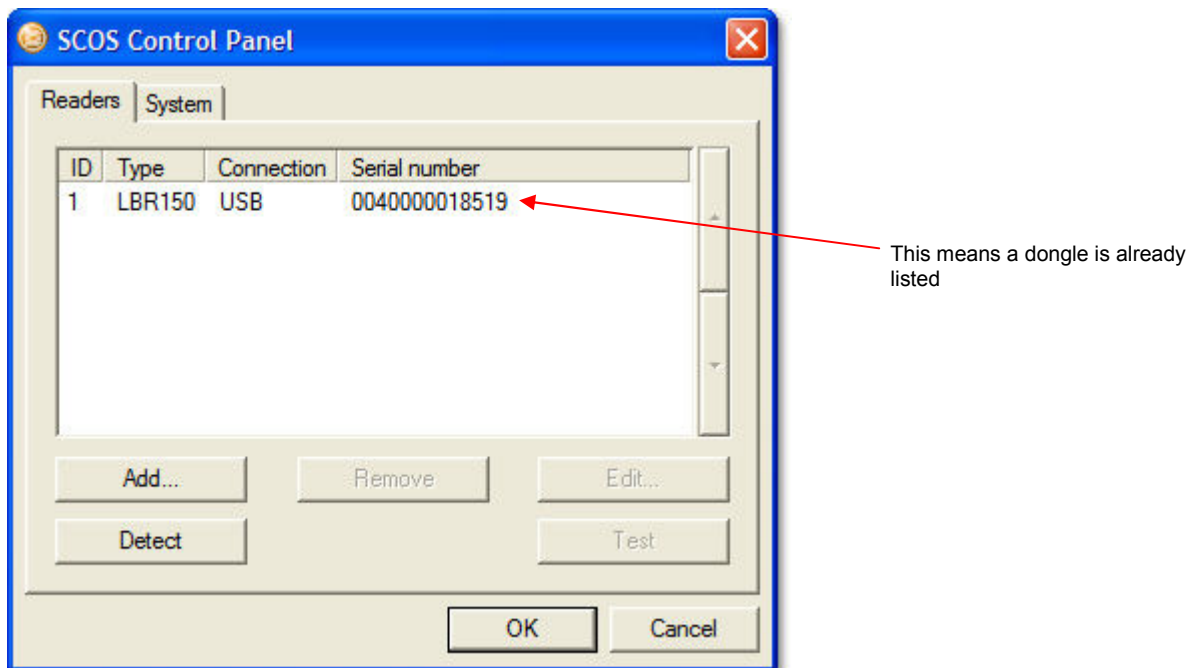
Smart Card

Once you have made sure your dongle is correctly connected to your PC, you must also make sure your CardFive smartcard licence key is the correct licence card for your CardFive software and that the card is inserted firmly with the smartcard contacts facing up.

Procedure

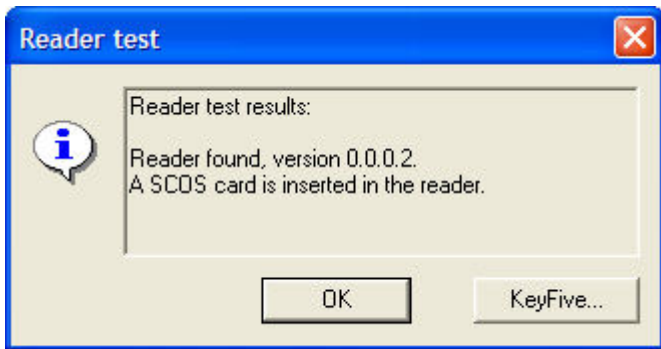
Here is a small procedure that will tell Windows XP where to look for your licence key when loading CardFive.

1. Click "Start" > "Settings" > "Control Panel". Once you see control panel, make sure that you are viewing it in classic mode by clicking on "Switch To Classic Mode" located in the left menu.
2. Now locate the icon called "SCOS" and double click on it. The following box will appear:



3. If a dongle is already listed, simply highlight it by clicking on it once and then pressing "Remove".
4. To detect your dongle, first make sure it is plugged in to your computer correctly. Now press "Detect", and with luck your dongle will be listed in the "SCOS Control Panel" box. If after a couple of tries your dongle isn't listed then you may need to use a different USB port.

5. If the detect was successful you will then need to make sure your dongle and card are working. To do this press the "Test" button and you should see another box like this one below:



6. If this is what you see then finish by clicking "OK", "OK" in the "SCOS Control Panel", then closing "Control Panel".

Now you should be able to successfully load CardFive.

