

Database Credential Setup In CardFive Vision

This is now the standard when working with databases that ask for Login and Password, typically SQL Server, Oracle, My SQL, etc...

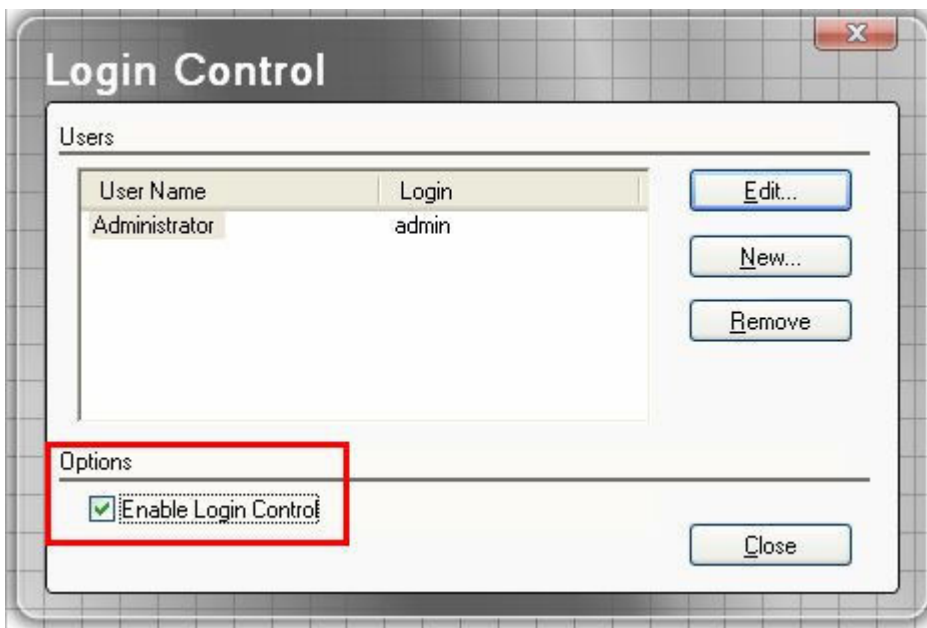
This is needed because of the new print engine that was implemented in CardFive Vision, this engine separate both processes (Print and Card Design / Configuration / DB Connection) in order to free up user to continue working on CardFive without being stuck on print process, so from now on CardFive needs to hold the db credentials on the Logins in order to proceed with Print (and encode) operations when they depend of database.

This was not happening in 7.x because the process was synchronous, the card and the print process were always "connected" to the database and you just need to input the credentials one time (when load the card file) but you were not able to do any other operation during the process.

1. Go to the File menu > Logins:



2. Now create a new User or Edit the one already present and enable the Login Control:



3. Now input the Database Credentials according to Oracle defined ones and then restart CardFive, after this he will not be prompted to enter database logon on each operation done:

