

TUP500 Printer Specifications

Mechanism - TMP542 & Cutter	
Print Method	Direct Line Thermal Printing
Print Speed	up to 220mm per second (for use with suitable 80 / 82.5mm high sensitivity paper with standard 15cm roll diameter) Default speed 180mm per second
Printable Width	Max. 80mm with 1st column print
Top Margin	11mm (3mm selectable with reverse feed)
Print Resolution	8 or 16 x 8 dots / mm (203 or 406 x 203 dpi)
Paper Feed Speed	up to 220mm per second
Paper Loading	Semi Automatic with easy "Lift & Tilt" Functionality
Paper Sensors	Black Mark / Paper End / Paper Low Sensors
Paper Specifications:	
Width	Min. 45mm to Max 82.5mm
Media	Thermal Paper Rolls
Two Colour Printing	Special Thermal Paper required
Thickness	0.065 ~ 0.15mm
Roll Diameter	15cm / 6" with 25.4cm / 10" option (RHU-T500)
Autocutter	Full Cut (Guillotine) – contact Star if Partial cut needed
Autocutter Life	up to 1 million cuts
Min. / max. Cut Length	TUP542: 25mm, TUP592: 75 ~ 300mm
Print Head Life	Max. 100 million pulses / 100 Km (using recommended paper)
Reliability	60 million lines MCBF
Mechanism Dimensions	TMP542: 135 (W) x 101 (D) x 103 (H) mm
Open Frame Dimensions	TUP592: 160 (W) x 234.1 (D) x 179 (H) mm
Without Presenter	TUP542: 160 (W) x 185 (D) 179 (H) mm
Drivers	Windows 2000/XP/XP Embedded/WePOS/Vista™/CE, Linux™, Mac OS X, Windows 98/ME/NT4 (download only) OPOS™, Java-POS™, CUPS™, POS.Net, USB Vendor Class, Star IO, Scalable Raster Driver

Interface	TUP500 Series supplied without interface
Interface Options	USB (IFBD-HU05), Ethernet (IFBD-HE05), Parallel (IFBD-HC03), Serial RS232C (IFBD-HD03), 9-pin Serial (IFBD-HN03)
Presenter Unit - PR500	
Driving Motor	One DC motor
Paper Loop	Upper Side Loop
Presenter Function	Document Eject Document Capture (Timed or Software controllable)
Ejecting Speed	300mm/s
Paper Thickness	0.065 ~ 0.15mm
Paper Length	75 to 300mm with Journal Mode for End-of-Day reporting
Paper Width	Min. 45mm to Max 82.5mm
Dimensions	135.1 (W) x 57 (D) x 76.3 (H) mm
Life	1 million receipts
Control Board TBD500	
Flash ROM / SRAM	16 Mbit / 4 Mbit (2M x 2)
Logo Store	Enabled
Emulations	Star Line & Page Mode, ESC/POS™
Code Pages	Star Mode = 40 + 1 blank ESC/POS™ Mode 10 + 1 blank
TUP500 Open Frame and Mechanism Options	
	<ul style="list-style-type: none"> • USB, Ethernet, Parallel, Serial RS232C, 9-pin Serial interface • PS60 Power Supply • 25cm / 10" Paper Roll Holder (RHU-T500) • Large Roll Damper Roller Unit (DRU-T500B) • Paper Exit Guide ((SNOUT-T500)) – LED lit with Flashing Attraction Mode • Weight Bar (heavy weight paper use) – PR5 (included at purchase)
	Please contact Star for other options when installing the TMP500 Mechanism

TUP900 Printer Specifications

Mechanism - TMP942 & Cutter	
Print Method	Direct Thermal Line Printing
Print Speed	up to 150mm per second
Top Margin	15mm (3mm selectable)
Print Resolution	8 x 8 dots / mm (203 x 203 dpi)
Paper Feed Speed	150mm / second
Paper Loading	Semi Automatic with easy "Lift & Tilt" Functionality
Paper Sensors	Black Mark / Paper End / Paper Low Sensors
Paper Specifications:	
Width	80 to 112mm
Media	Thermal Paper Rolls
Two Colour Printing	Special thermal paper required
Thickness	0.065 ~ 0.15mm
Roll Diameter	15cm / 6" with 25cm / 10" option (RHU-T900)
Autocutter	Full or Partial Cut (Guillotine) Full Cut only with Presenter PR900 and TUP992
Autocutter Life	up to 1 million cuts
Reliability	37 million lines MCBF
Mechanism Dimensions	TMP942: 176.2 (W) x 101 (D) x 121 (H) mm
Bar Code	UPC-A, UPC-E, JAN/EAN-8 JAN/EAN-13, ITF, CODE39, CODE93, CODE128, CODABAR (NW-7), (PDF417 & Maxicode to follow)
Drivers	Windows 2000/XP/XP Embedded/WePOS/Vista™/CE, Linux™, Mac OS X, Windows 98/ME/NT4 (download only) OPOS™, Java-POS™, CUPS™, POS.Net, USB Vendor Class, Star IO, Scalable Raster Driver

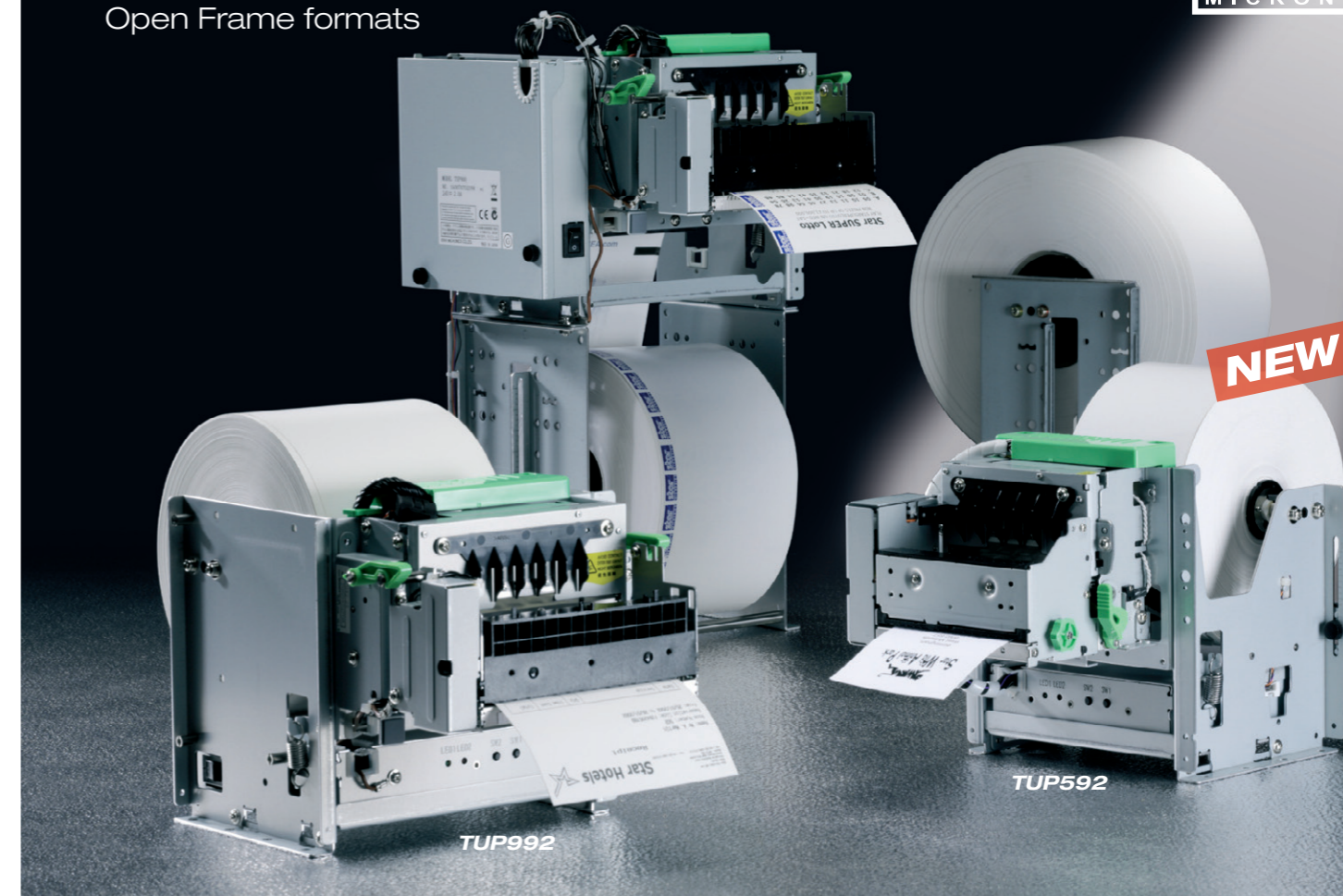
Interface	TUP900 Series supplied without interface
Interface Options	USB (IFBD-HU06), Parallel (IFBD-HC04), Serial (IFBD-HD04), Serial 9-pin (IFBD-HN04)
Presenter Unit - PR900	
Driving Motor	One DC motor
Paper Loop	Upper Side Loop
Presenter Function	Document Eject Document Capture (Timed or Software controllable)
Ejecting Speed	300mm/s
Paper Thickness	0.065 ~ 0.15mm
Paper Length	75 to 300mm
Paper Width	80 to 112mm
Life	1 million receipts
Control Board TBD900	
Flash ROM / SRAM	2 x 8 Mbit plus 2 x 1 Mbit Static RAM
Logo Store	2 Mbit
Emulations	Star Line & Page Mode, ESC/POS™
Code Pages	Star Mode = 40 + 1 blank ESC/POS™ Mode = 10 + 1 blank
TUP992 Open Frame System	
Overall Dimensions	192 (W) x 249.3 (D) x 179 (H) mm / 2.84Kg
Printing Solution	All specifications for each module apply
TUP500 & TUP900 Power Supply - PS60	
Supply Voltage	24V DC, (59 (W) x 32 (H) x 146 (L) mm)
Input Voltage	100V (-10%) to 240V (+10%)

Star Micronics EMEA, Star House, Peregrine Business Park, Gomm Road, High Wycombe, Bucks HP13 7DL, UK
Telephone: +44 (0) 1494 471111 Fax: +44 (0) 1494 473333 Email: sales@Star-EMEA.com

UK2.09b

TUP500/900 Series

Complete Kiosk Printing Solutions available in Modular or Open Frame formats



TUP500 Series: The **NEW** High Speed 220mm per second, compact Kiosk Printing Solution able to print output on media from 45 – 82.5mm wide and up to 0.15mm thick.

TUP900 Series: The industry standard 150mm per second Kiosk Printing Solution able to print output on media from 80 – 112mm wide and up to 0.15mm thick.

Star's position as the No. 1 supplier of kiosk printers has been further strengthened by the launch of the new high speed TUP500 Series offering a unique solution for 45 – 82.5mm output at up to 220mm per second. Star's decades of experience of providing effective printing solutions for the kiosk industry had already been fully demonstrated by the world-wide acceptance of the highly reliable and versatile TUP900 Series; the TUP500 is also able to be used as a complete open frame solution or in modular format. The printer's metal sides can be easily removed; the paper spindle holders or control panel relocated etc. so that kiosk developers can adapt the TUP500 or TUP900 Series to fit the most challenging of kiosk layouts.

Typical Applications

- Versatile Kiosk Output from 45 to 112mm wide media with mono or two colour 203 dpi Graphics
- Employment Agency / Job Selector (A4 to A6 Auto reduction)
- Information Terminal (A4 to A6 Auto reduction)
- Internet Screen Dump (A4 to A6 Auto reduction)
- Hotel Receipting
- Labels – Warehousing / Retail / Internet Despatch
- Library Kiosk
- Lottery
- Point-of-Sale – Receipting / Coupons
- Retail Catalogue Sales / Wedding Lists

- Self-Service Flight Boarding / Fast Food Orders
- Ticketing – Car Parks, Cinemas, Concerts, Exhibitions, Theatres
- Top-Up for Mobile Phones...etc. etc.

Printer Models

TUP592 & TUP992

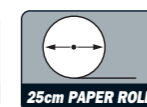
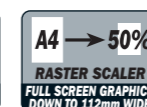
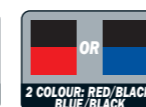
Open frame printer solution with moveable control panel and paper near end sensors via extended cables

TUP542 & TUP942

Non presenter version

TUP500 & TUP900

Modular components available (see tables on back page)

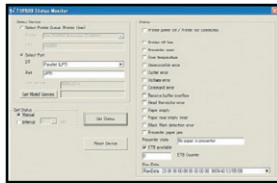


Star Support

Speak to any of Star's customers and they will agree that Star provides support at every level with in-depth printer installation and knowledge from a European team with over 50 years of Star experience between them. Our customers now take for granted that we supply effective drivers for the majority of today's operating platforms, including those not offered by many of our competitors, from Linux™ to MAC™ and PoS.Net™ etc.

The new TUP500 mirrors many of the features found in the TSP700II Advanced Configuration Utility from simple Graphics management to Ethernet and Memory Switch set-up as well as the Auto-Text reverse mode for vertical printer use.

The new TUP500 also features a simple, easy-to-use **Status Monitor Tool** (left), ideal for system integrators, software houses and users who want more control over their printing devices. Contact the technical team for the in-depth information you need at techsupport@Star-EMEA.com



JAVAPOS™

OPOS



ESC/POS™

Vista™
WHQL

Compatibility with most major operating systems

Star Options

Star's years of experience in the kiosk industry has led to a series of refined options making life easier for the system builder as well as the end user.



Flashing Snout / Paper Exit Guide

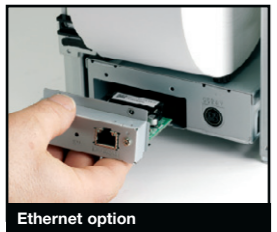
Paper exit guide / snout with flashing LED attraction mode to highlight emerging printed document.

Star Communication Flexibility

In order to provide the most cost-effective solution for all our customers, all TUP Series models are supplied without interface with low cost, user installable USB, Ethernet and traditional interface options.

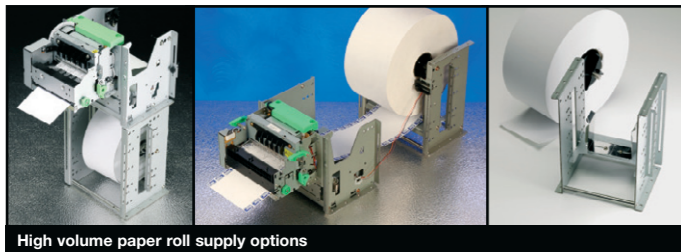
Multi-Positional High Volume Paper Roll Supply Option

Both the TUP500 & TUP900 Series feature generous 15cm diameter paper roll handling as standard. However, larger paper rolls, from 80mm to 112mm wide can be placed



Ethernet option

above, below or behind the printer mechanism for ultimate flexibility. This option can use up to 25cm rolls in landscape mode or 18cm when used in vertical mode directly below the printer and can use the spindle and paper core holders supplied with the original open frame unit. The multi-position adjustable near end sensor with extendable cable can be transferred to the optional Paper Supply Unit.



High volume paper roll supply options

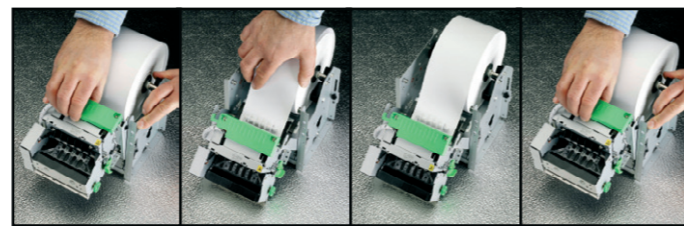
Industry exclusive features with unique specialist options



Star Design

Simple, yet so effective Paper Loading

Easy-load – simply lift and tilt the mechanism forward and insert the paper for automatic paper loading. It couldn't be easier!



Star Performance

The new Superfast, versatile TUP500 Series can provide the highest printing speeds available today from a modular open frame dedicated kiosk printer at 220mm per second with a default speed of 180mm per second using the optional 25cm paper roll holder, while the TUP900 can also manage a fast 150mm on super-wide paper of up to 112mm.

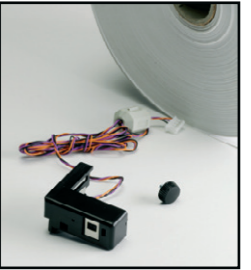
Star Modular Components

Included with Open Frame Printers...

Near End Paper Sensor NEU-T900 / NEU-T500

The multi-position adjustable near end sensor can be easily and securely placed in any desired position to detect "paper low" on paper of various widths and diameters.

The 11 position adjustable near end paper sensor with approximately 80cm of cable can be moved to a variety of positions as well as transferred to the optional high volume Paper Supply Unit.



Printer Control Panel

The printer's control boards can be moved and mounted onto either side of the printer's frame or elsewhere as required for ultimate design flexibility and come complete with power and error LEDs.



Star and the Environment

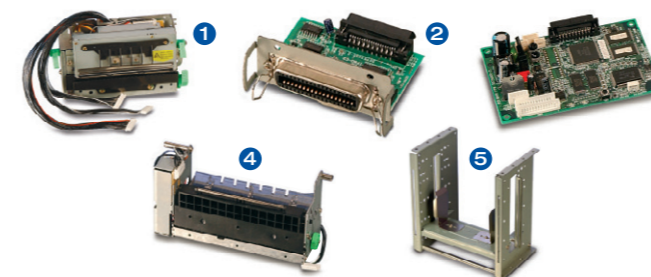
Star takes its responsibilities very seriously and is always endeavouring to reduce any environmental damage from reducing packaging etc. to producing printers with lower CO₂ emissions. The TUP900 is an alternative to the traditional A4 printer with reduced paper usage and low CO₂ emissions while the new TUP500 features a low peak current mode as well as reduced Top Margin. This, along with Star's recommendation to using the reduced line spacing, can reduce the paper used by over 25%! The **Document capture / Anti-Litter mode** for internal storage of unwanted output via the presenter's capture feature (timed or software controllable) completes the green package for Star's Open Frame kiosk printers.

Star Quality & Reliability

Time and time again Star Micronics has won major projects around the world due to its reputation for reliability. Star's integral design from the custom engineered spindle, high quality 406 x 203 dpi printer mechanism to its rigid design which can then be broken down into reliable flexible, space saving modules has demonstrated why Star has won so many of the world's largest kiosk printer installations.



Star Modular Component Options



- 1 Compact TMP942 or TMP542 printer mechanisms with cutter
- 2 Choice of Interfaces (see back page)
- 3 TBD900 and TBD500 control boards as well as the relevant Power supply boards
- 4 PR900 and PR500 slimline presenters with document capture
- 5 RHU-T900 and RHU-T500 high capacity paper supply units
- 6 DRU-T500 and DRU-T900 Damper Roll options for use with high capacity paper supply unit

Star Output – (A4 to virtual A6 picture)

Barcodes, receipts, tickets and automatically reduced A4 information sheets can all be printed on media ranging from 45mm in width to 112mm (depending on model used) using paper up to 0.15mm thick. Both the TUP500 with multiple user settings and TUP900 (80, 102mm) can easily be adjusted using the self centring manual paper guides and the unique Star precision graduated spindle provided with the units.

Also included are three interchangeable paper roll core fixings for the following paper core sizes: 25.4mm, 50.8mm and 76.2mm (1", 2" and 3").

- Easily adjustable, self-centring, manual guides for different paper widths

- The high quality tension bar will maintain the paper tension and decrease paper roll acceleration while the Damper Roller option will enable effortless printing for high capacity paper roll usage.

